



AI-enhanced surveillance.

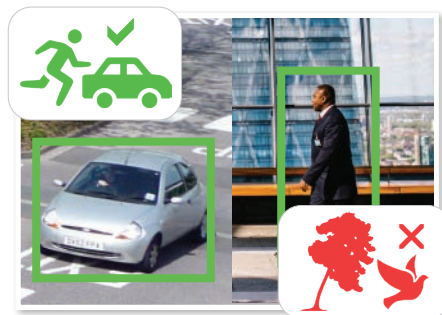
Compact Series: Smart AI Face Recognition NVRs available in 16 channels

The Watchguard™ Compact AI Series offers advanced technologies to transform the way surveillance works for you. Monitor your operations with greater efficiency, security & reliability using intelligent face recognition, people/vehicle identification & more. Identify strangers & VIPs, create blacklists, search footage playback and receive intelligent alerts to your devices for highly reliable security notifications.

- Record beyond Ultra HD up to 16.0MP (4920 x 3264)
- 200Mbps incoming bandwidth (80Mbps with AI)
- 2 x SATA ports for up to 20TB HDD storage
- Built in PoE switch (ePoE & EoC support for ports 1-8)
- Native Ultra HD live view on 4K monitors via HDMI
- Perimeter protection for up to 4 channels (10 IVS rules per channel) for accurate vehicle and people detection
- Identify people with 2 channels for face recognition
- AI face searching for up to 8 faces at once (12 faces/sec)
- Receive face recognition & perimeter alerts on device(s)



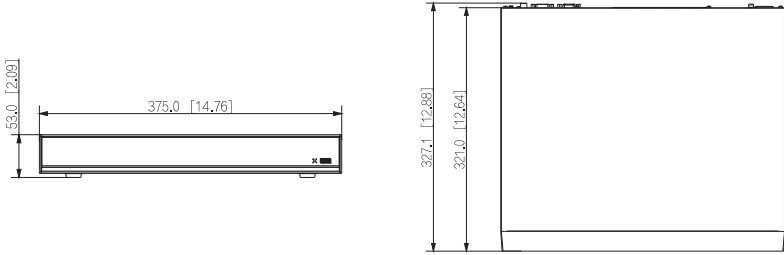
AI Powered Facial Recognition



Smart Person & Vehicle Detection



Intelligent Footage Searching

Specifications		16 Channel AI NVR
Ordering Information		NVR16COM-I
General	Main Processor / OS	Multi-core Embedded Processor, Embedded Linux OS
	Video Input	16 Channels
	Two-way Talk	1 Channel Input, 1 Channel Output, RCA
	Interoperability	ONVIF 2.4, SDK, CGI
	Video Output	1 x HDMI, 1 x VGA
Display	Display Resolution	Configurable from 3840 x 2160 to 1024 x 768
	Display Split	1/4/8/9/16
	OSD	Camera title, Time, Video loss, Camera lock, Motion detection, Recording
Recording	Recording Resolution	Configurable from: 16.0MP (4920 x 3264) to D1 (704 x 480)
	Incoming Bandwidth	200Mbps (80Mbps when AI function is enabled)
	Decoding Capacity	2 channel: 8.0MP (30fps) / 8 channel: 1080p (30fps)
	Video Compression	H.265+ / H.265 / H.264+ / H.264 / MJPEG
	Record Modes	Manual, Schedule (Continuous, MD (Motion Detection), Alarm, IVS)
Face Recognition	Record Interval	1~120 min (default: 60 min) / Pre-record: 1~30s / Post-record: 10~300s
	Performance	Max. 12 face pictures per second (modeling and comparing), 2 channels face recognition with standard cameras (<i>Performance varies depending on camera and resolution</i>)
	Stranger Mode	Detect strangers face (not in database)
	AI Search	Up to 8 target face images at the same time
	Database Management	Up to 10 face databases with 20,000 face images in total. Name, gender, birthday, nationality, address, ID information can be added to each face picture
Perimeter	Database Application	Each database can be applied to video channels independently
	Trigger Events	Buzzer, Voice Prompts, Email, snapshot, Recording, Alarm Out, PTZ activation, etc.
	Performance	4 channels, 10 IVS rules for each channel
	AI Search	Search by target classification (Human, Vehicle)
	Object Classification	Human / vehicle secondary recognition for tripwire and intrusion
Metadata	Face	Gender, age, glasses, beard, mask
	Vehicle	Vehicle colour, vehicle model, vehicle logo, plate colour, vehicle decorations, call, seatbelt
	Human Body	Tops style, tops colour, bottom style, bottom colour, hat, bag
	Non-motor Vehicle	Type, colour, people, number
	AI Search	Support search target video by metadata
Features	Alarm Input / Output	4 channel alarm inputs / 2 channel relay output
	Trigger Events	Alarm Out, Video Push, Email, Recording, PTZ, Tour, Snapshot, Voice Prompt, Buzzer & Screen Tips
	Video Detection	Motion Detection, MD Zones: 396 (22 x 18), Video Loss, Tampering & Scene Change
	Playback Sync	1/4/9/16
	Search Modes	Time / Date, Alarm, MD & Exact Search (to the second)
Network	Backup Modes	USB Device / Network
	Ethernet	1 RJ45 Ports (10/100/1000Mbps)
	Power over Ethernet	16 Ports (IEEE802.3af/at), 1-8 Ports Support ePoE & EoC
	ePoE Range	300m (100Mbps, 25.5W), 800m (10Mbps, 13W)
	Network Functions	HTTP, HTTPS, TCP/IP, IPv4/IPv6, UPnP, SNMP, RTSP, UDP, SMTP, NTP, DHCP, DNS, IP Filter, PPPoE, DDNS, FTP, Alarm Center, IP Search (Support IP camera, DVR, NVS, etc.), P2P
Storage	Max. User Access	128 users
	Remote View	IOS (iPhone, iPad), Android Devices
	Internal HDD	2 x SATA III Ports up to 10TB, max. 20TB HDD capacity
	HDD Modes	N/A
	USB Interface	2 x USB Ports (1 x Rear USB 3.0, 1 x Front USB 2.0)
Environment	Auxiliary Inputs	1 x RS232
	Power Supply	Single, 100V~240VAC, 3.5A
	Power Consumption	<6.1W (without HDD) / PoE: Max 25.5W for single port, 130W total
	Operating Environment	-10°C ~ +55°C / 0 ~ 90%RH / 86 ~ 106kpa
	Dimensions / Rack Units	375mm x 327mm x 53mm, 1U
Additional Information	Weight	2.68kg (without HDD)
	Product Diagrams	 <p>The diagrams show the physical dimensions of the NVR. The front view shows a width of 375.0 mm [14.76 inches] and a height of 53.0 mm [2.09 inches]. The side view shows a depth of 327.1 mm [12.88 inches] and a height of 321.0 mm [12.64 inches].</p>

Your local Watchguard™ professional: