

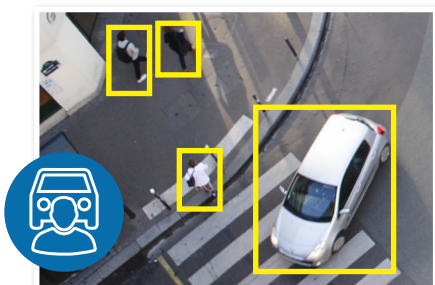


# AI surveillance for SMBs.

## Compact AI Series: NVR available in 4, 8, and 16 channels with PoE

Transform the way you secure your home or small business with Watchguard™ Compact AI Series Network Video Recorders. Use superb accuracy AI detection to take the guesswork out searching footage and get important AI video notifications as they happen. Experience peace of mind with capacity for months of footage storage and integrate a huge range of cameras to protect what's most important to you.

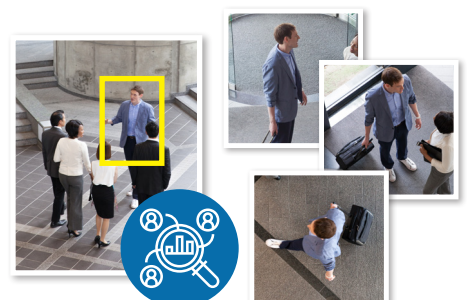
- Record up to 16.0MP with H.265 video compression
- Up to 256Mbps bandwidth (180Mbps AI enabled)
- Suite of AI functions for improved alerts & playback
- Supports AI face detection and recognition via NVR
- Supports AI human/vehicle detection via NVR
- Supports ANPR by camera up to 16 channels
- Up to 2 x SATA bay with support for up to 16TB capacity
- Built-in Power over Ethernet switch
- HDMI (4K) and VGA simultaneous video output
- Backup via external USB device or local network



AI Human & Vehicle Detection



AI Face Detection & Recognition



Find Footage with AI Quick Search

		NVR4COM-1	NVR8COM-1	NVR16COM-1	
General	Video Input	4 channels	8 channel	16 channel	
	Processor & Operation	Industrial-grade processor, Embedded Linux OS, Web Interface / Local GUI			
	Interoperability	ONVIF 21.12(Profile T; Profile S; Profile G); CGI; SDK. Supports Panasonic, Sony, Samsung, Axis, Pelco, Arecont, Canon. Chrome, IE9 and later, Firefox support.			
	App Integration	iOS / Android			
Recording	Recording Resolution	Configurable from 16.0MP (4920 x 3264) to CIF (352 x 288)			
	Network Bandwidth	AI Disabled	80Mbps (incoming/recording/outgoing)	256Mbps (incoming/recording/outgoing)	256Mbps (incoming/recording/outgoing)
		AI Enabled	80Mbps (incoming/recording/outgoing)	180Mbps (incoming/recording/outgoing)	180Mbps (incoming/recording/outgoing)
	Video & Audio Compression	Video: Smart H.265+ / H.265 / H.264 / H.264+ / MJPEG, Audio: G.711a / G.711u / PCM / G.726			
	Playback	Channels	4 Channels	8 channels	16 Channels
		Modes	General Recording, Motion Detection, Intelligent Events, Alarm Triggers		
	Decoding Capacity	AI Disabled	4 channel: 8.0MP (30fps)	8 channel 4.0MP (30fps)	16 channel 1080p (30fps)
AI Enabled		4 channel: 5.0MP (30fps)	8 channel: 1080p (30fps)	12 channel 1080p (30fps)	
Backup Method	USB device / network				
Interface	HDD	1 x SATA Ports up to 16TB		2 x SATA Ports up to 16TB	
	Audio	1 channel input (RCA), 1 channel output (RCA)			
	Alarm	Interface	-		
		Types	Record, snapshot, IPC external alarm output, audio, buzzer, log, preset, email		
		Actions	Begin record, take snapshot, camera external alarm output, audio, buzzer, NVR log, camera preset, email		
	Display	Input	1 x HDMI, 1 x VGA		
		Split	1st screen: 1/4, 2nd screen: 1/4	1st screen: 1/4/8/9, 2nd screen: 1/4/8/9	1st screen: 1/4/8/9/16, 2nd screen: 1/4/8/9/16
	Network	Input	4 ports, 10/100 Mbps, IEEE 802.3 af/at	8 ports, 10/100 Mbps, IEEE 802.3 af/at	16 ports, 10/100 Mbps, IEEE 802.3 af/at
		Functions	HTTP, TCP/IP, IPv4/IPv6, UPNP, RTSP, UDP, SMTP, NTP, DHCP, DNS, IP Filter, PPPoE, DDNS, FTP, Alarm Server, IP Search, Easy4ip		
	USB	1 x Front USB 2.0, 1 x Rear USB 2.0			
Artificial Intelligence	NVR Operated AI	Face detection, face recognition, AI Tripwire/Intrusion and AI Human/Vehicle Detection			
	Supported Camera AI	Face detection, ANPR, People Counting, Heatmap, AI Tripwire/Intrusion and AI Human/Vehicle Detection			
	Face Detection	Functions	Gender, Age Group, Glasses, Expressions, Face Mask, Beard		
		By NVR	1 channel (up to 12 face images per second, per channel)		
		By Camera	4 channels	8 channels	8 channels
	Face Recognition	Capacity	NVR Supports up to 10 face databases and 200,000 face images		
		By NVR	1 channel (Face detection via NVR video stream analysis; Face recognition performed by NVR)		
		By Camera	4 channels (Face detection performed via Face Capture cameras via image stream; Face recognition performed via NVR)	8 channels	8 channels
	Human/Vehicle Detection	Functions	AI Tripwire & Intrusion (IVS), AI Motion Detection (SMD)		
		By NVR	IVS: 2 channels (10 rules per channel) SMD: 4 channels	IVS: 2 channels (10 rules per channel) SMD: 4 channels	IVS: 2 channels (10 rules per channel) SMD: 4 channels
By Camera		IVS: 4 channels, SMD: 4 channels	IVS: 8 channels, SMD: 8 channels	IVS: 8 channels, SMD: 8 channels	
ANPR	Functions	Up to 20,000 plate numbers, blacklist & allowlist			
By Camera	4 channels				
Environment	Power Supply	53VDC / 1.226A	53VDC / 1.812A	100~240VAC / 47~63 Hz	
	Power Consumption	<10W (without HDD) / PoE: Max 25.5W for single port, 36W total	<10W (without HDD) / PoE: Max 25.5W for single port, 72W total	<10W (without HDD) / PoE: Max 25.5W for single port, 130W total	
	Operating Environment	-10°C ~ +55°C / 10 ~ 93%RH			
	Dimensions / Rack Units	260mm x 232.7mm x 47.6mm / 1U		375mm x 329.3mm x 53mm / 1U	
	Weight	0.86kg (without HDD)	0.92kg (without HDD)	2.60kg (without HDD)	
Additional Information	Product Diagrams				
		<ul style="list-style-type: none"> <li>1 Power Input</li> <li>2 PoE Ports</li> <li>3 Network Port</li> <li>4 VGA Port</li> <li>5 AUDIO OUT, RCA Connector</li> <li>6 AUDIO IN, RCA Connector</li> <li>7 HDMI Port</li> <li>8 USB Port</li> <li>9 Ground</li> </ul>	<ul style="list-style-type: none"> <li>1 Power Input</li> <li>2 PoE Ports</li> <li>3 Network Port</li> <li>4 VGA Port</li> <li>5 AUDIO OUT, RCA Connector</li> <li>6 AUDIO IN, RCA Connector</li> <li>7 HDMI Port</li> <li>8 USB Port</li> <li>9 Ground</li> </ul>	<ul style="list-style-type: none"> <li>1 VGA Port</li> <li>2 RS-232 Port</li> <li>3 AUDIO OUT, RCA Connector</li> <li>4 Power Input</li> <li>5 Power Switch</li> <li>6 PoE Ports</li> <li>7 Alarm In/Out</li> <li>8 HDMI Port</li> <li>9 USB Port</li> <li>10 Network Port</li> <li>11 AUDIO IN, RCA Connector</li> <li>12 Ground</li> </ul>	

Your local Watchguard™ professional:

[www.activeonline.com.au](http://www.activeonline.com.au) 1300 816 742